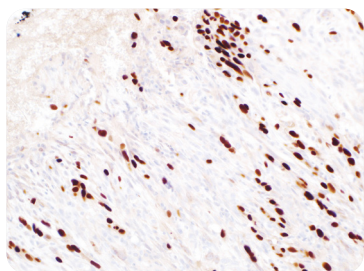


Cell Marque™ Tissue Diagnostics

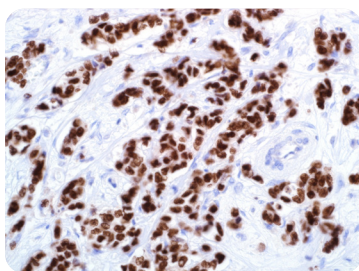
## ECONOMICAL 25 mL BULK SIZES

Choosing bulk can help with your lab's growing needs while keeping costs low and minimizing waste. With over 50 Cell Marque™ antibodies offered in economical 25 mL sizes, you can join the many laboratory heroes who've already made the switch to these valuable single-lot products.

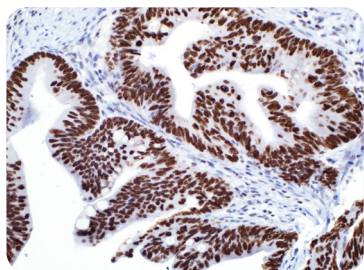
### Top 25 mL Products



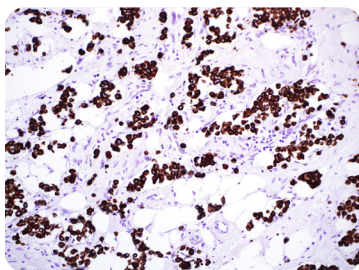
SOX-10 (EP268)



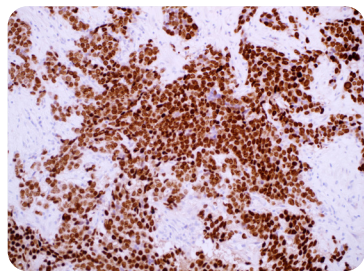
GATA3 (L50-823)



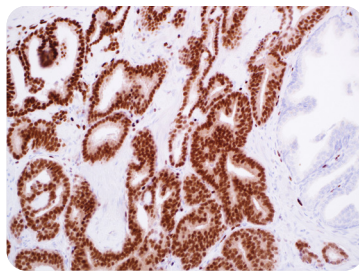
SATB2 (EP281)



Cytokeratin (CAM 5.2)



NKX3.1 (EP356)



ERG (EP111)



**Bulky**  
#histohero

**Cut** validation efforts with a larger volume, single-lot product.

**Reduce** shipping costs, fuel surcharges and other hidden fees.

**Minimize** the carbon footprint with fewer deliveries.

**Resist** rising laboratory costs with bulk sizing.



## Complete 25 mL Antibody List

Antibody	Cat. No.
Actin, Muscle Specific (HHF35)	201M-90
Actin, Smooth Muscle (1A4)	202M-90
Arginase-1 (SP156)	380R-10
BCL2 (124)	226M-90
BCL6 (GI191E/A8)	227M-90
C4d (SP91)	404R-10
CD3 (polyclonal)	103A-70
CD10 (56C6)	110M-10
CD20 (L26)	120M-80
CD45 (LCA) (2B11 & PD7/26)	145M-90
CD117, c-kit (YR145)	117R-10-ASR
CD138/syndecan-1 (B-A38)	138M-10
CDX-2 (EPR2764Y)	235R-10
Chromogranin A (LK2H10)	238M-90
Cytokeratin (34betaE12)	334M-80
Cytokeratin (CAM 5.2)	452M-90
Cytokeratin 5 & 6 (D5 & 16B4)	356M-10
Cytokeratin 7 (OV-TL 12/30)	307M-90
Cytokeratin 8 & 18 (B22.1 & B23.1)	818M-90
Cytokeratin 20 (Ks20.8)	320M-10
Cytokeratin Cocktail (AE1 & AE3)	313M-10
EMA (E29)	247M-90
Ep-CAM (MOC-31)	248M-10
ERG (EP111)	434R-10
Estrogen Receptor (EP1)	249R-20-ASR
GATA3 (L50-823)	390M-10
GCDFP-15 (23A3)	257M-10
Glypican-3 (1G12)	261M-90
Helicobacter pylori (polyclonal)	215A-70-ASR
Hepatocyte Specific Antigen (Hep Par-1) (OCH1E5)	264M-90
Her2/Neu (EP3)	237R-20-ASR
Kappa (L1C1)	274M-90

Antibody	Cat. No.
Ki-67 (SP6)	275R-10
Lambda (Lamb14)	277M-90
Mammaglobin (31A5)	280R-10
MART-1 (Melan A) (M2-7C10)	281M-90
Melanoma Cocktail (HMB-45 + A103 + T311)	904H-00
MiTF (C5/D5)	284M-90
MLH1 (G168-728)	285M-10-ASR
MLH1 (M1)	285M-20-ASR
MSH2 (G219-1129)	286M-10-ASR
MSH6 (44)	287M-10-ASR
Napsin A (MRQ-60)	352M-90
NKX3.1 (EP356)	441R-10
p16 <sup>INK4A</sup> (JC2) also known as 16P04	416M-10-ASR
p120 Catenin (MRQ-5)	420M-10
P504s (13H4)	504R-10-ASR
PAX-5 (EP156)	312R-20
PAX-8 (MRQ-50)	363M-10
Phosphohistone H3 (PHH3) (polyclonal)	369A-10
Podoplanin (D2-40)	322M-10
PMS2 (EPR3947)	288R-10-ASR
Progesterone Receptor (Y85)	323R-10-ASR
Renal Cell Carcinoma (PN-15)	329M-90
S-100 (4C4.9)	330M-10
SATB2 (EP281)	384R-10
SOX-2 (SP76)	371R-10
SOX-10 (EP268)	383R-10
SOX-11 (MRQ-58)	382M-10
Synaptophysin (polyclonal)	336A-70
TTF-1 (8G7G3/1)	343M-90
Vimentin (V9)	347M-10
WT1 (6F-H2)	348M-90



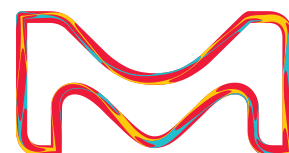
Toll Free: 800.665.7284  
 Phone: 916.746.8900  
 Fax: 916.746.8900  
 Email: [service@cellmarque.com](mailto:service@cellmarque.com)  
[www.cellmarque.com](http://www.cellmarque.com)

MilliporeSigma  
 400 Summit Drive  
 Burlington, MA 01803

[www.sigmaaldrich.com](http://www.sigmaaldrich.com)

Copyright © 2019 Merck KGaA, Darmstadt, Germany and/or its affiliates. All Rights Reserved. MilliporeSigma, the vibrant M, Sigma-Aldrich and Cell Marque are trademarks of Merck KGaA, Darmstadt, Germany or its affiliates. All other trademarks are the property of their respective owners.

CM Lit # 19-11-0064 2019 - 26736 Ver. 3.2 11/2019



Distributed by Abacus dx

1800 ABACUS (AUS) 0800 222 170 (NZ) | [info@abacusdx.com](mailto:info@abacusdx.com) | [www.abacusdx.com](http://www.abacusdx.com)

abacus dx